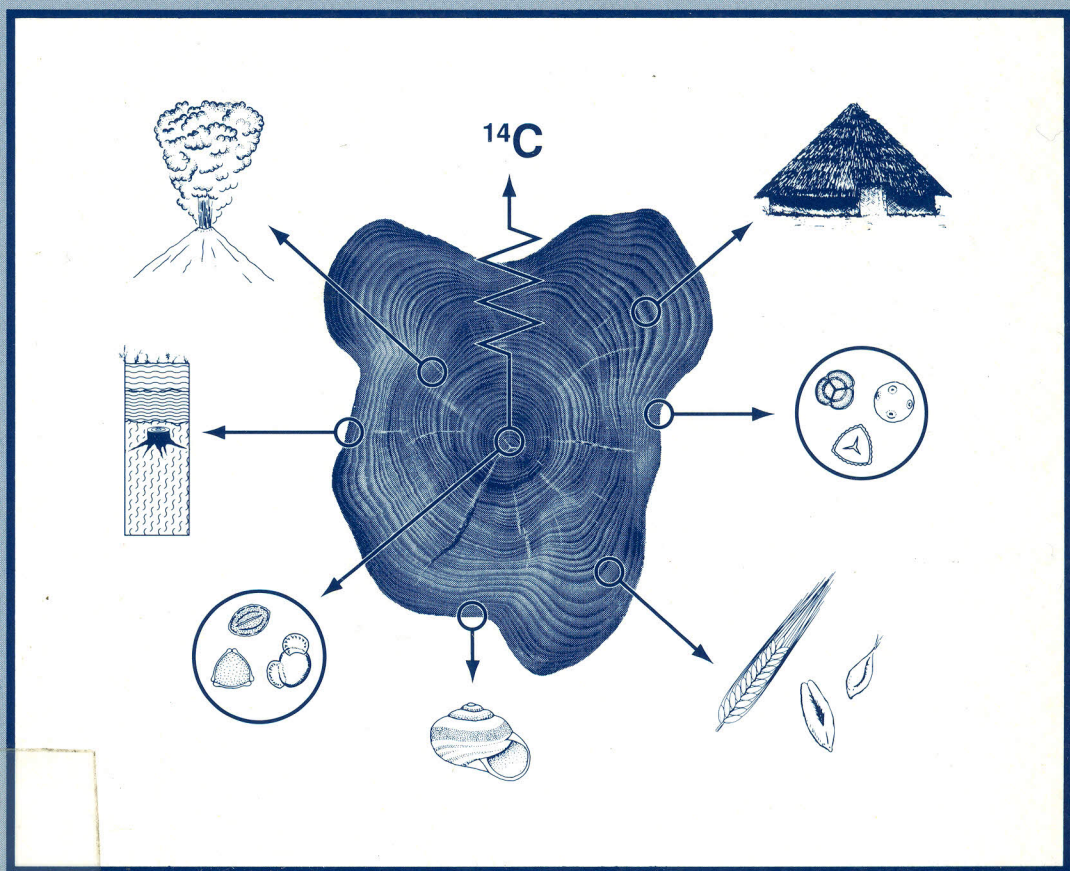


CLIMATE CHANGE AND HUMAN IMPACT ON THE LANDSCAPE

EDITED BY F. M. CHAMBERS



CHAPMAN & HALL

New in Paperback

Climate Change and Human Impact on the Landscape

*Studies in palaeoecology and
environmental archaeology*

Edited by

F.M. Chambers

Environmental Research Unit
Keele University
UK

303/3816 INSTITUT
FÜR METEOROLOGIE U. KLIMATOLOGIE
UNIVERSITÄT HANNOVER
HERRENHÄUSER STR. 2 - 30419 HANNOVER



CHAPMAN & HALL

London · Glasgow · Weinheim · New York · Tokyo · Melbourne · Madras

Contents

Contributors	xiii
Acknowledgements	xv
Preface	xvii
Editor's Notes	xix
Part One: Precision and Accuracy in Studies of Climatic Change and Human Impact	
Introduction	
1 Precision, concepts, controversies: Alan Smith's contributions to vegetational history and palaeoecology	5
H.J.B. Birks	
1.1 Introduction	5
1.2 Precision	5
1.3 Concepts	8
1.4 Controversies	9
1.5 Personal reflections	10
2 Forward to the past: changing approaches to Quaternary palaeoecology	13
Frank Oldfield	
2.1 Introduction	13
2.2 Inductive investigation in Quaternary palaeoecology	14
2.3 Deductive studies: the acid rain research	16
2.4 The future	19
3 Radiocarbon dating and the palynologist: a realistic approach to precision and accuracy	23
Jon R. Pilcher	
3.1 Introduction	23
3.2 The pioneer phase	23

3.3	The routine phase	24
3.4	The questioning phase	25
3.5	Is there a future?	29
3.6	A hypothetical project	29
4	Great oaks from little acorns. . . : precision and accuracy in Irish dendrochronology	33
	M.G.L. Baillie	
4.1	Introduction	33
4.2	First case study	34
4.2.1	An Ulster crannog	34
4.3	Discussion	35
4.3.1	Precise dating	35
4.3.2	Climatic and environmental effects	35
4.3.3	The 'suck-in' effect	36
4.3.4	Proxy data: quantitative climatic records	36
4.4	Second case study	36
4.4.1	An attempt to apply dendrochronology to the dating of the inner ditch at Haughey's Fort	36
4.4.2	Attempts to 'date' Q-7971	38
4.4.3	Inferences	38
4.5	Third case study	38
4.5.1	Early 16th century defoliations in Ulster	38
4.5.2	Localized effects and lessons therefrom	40
4.6	Conclusions	41
Part Two: Climatic Change on the Landscape		
Introduction		
5	Peat bogs as sources of proxy climatic data: past approaches and future research	47
	Jeff Blackford	
5.1	Introduction	47
5.2	Past approaches	47
5.2.1	The Blytt-Sernander scheme	47
5.2.2	Recurrence surfaces	50
5.2.3	The search for new methods	50
5.3	The present position	52
5.4	Future research	52
5.4.1	Dating techniques	52
5.4.2	Sites	53
5.4.3	Methods	55
5.5	Conclusions	55
6	Forest response to Holocene climatic change: equilibrium or non-equilibrium	57
	Richard Bradshaw	

6.1	Introduction	57
6.2	Case studies	58
6.2.1	Lake Michigan and the migration of <i>Fagus</i> in the USA	58
6.2.2	The western limits of <i>Pinus sylvestris</i> in Europe	60
6.2.3	The boreal-nemoral ecotone in central Sweden	63
6.3	Conclusions	65
7	Isolating the climatic factors in early- and mid-Holocene palaeobotanical records from Scotland	67
	J. John Lowe	
7.1	Introduction	67
7.2	Pollen records and the Holocene vegetational history of Scotland	68
7.2.1	Pioneer phase (c. 10 300 to 8500 BP)	68
7.2.2	Afforestation phase (8500 to 5000 BP)	70
7.2.3	Deforestation phase (5000 BP to present)	72
7.3	Pollen stratigraphy and palaeoclimatic inferences	72
7.3.1	Blytt-Sernander scheme	73
7.3.2	Time-lagged responses	73
7.3.3	Indicator-species approach	74
7.3.4	Conclusions	74
7.4	Isolating the climatic factors in Holocene palaeobotanical records	75
7.4.1	Early Holocene climatic reversion	75
7.4.2	Holocene range limits of pine	77
7.4.3	Variations in pine macrofossil abundance	80
7.4.4	Conclusions	80
8	Radiocarbon dating of arctic-alpine palaeosols and the reconstruction of Holocene palaeoenvironmental change	83
	John A. Matthews	
8.1	Introduction	83
8.2	Field sites	84
8.3	Problems of soil dating and the importance of laboratory pretreatment	84
8.4	Time elapsed since burial	88
8.5	Time since the onset of soil formation	90
8.6	Holocene glacier and climatic variations	92
8.6.1	Climatic implications	92
8.7	Soil history at Haugabreen and Vestre Memurubreen	93
8.7.1	Podsol development	93
8.7.2	Brown Soil	94
8.8	Vegetation history	94
8.8.1	Haugabreen (podsol) sites	94
8.8.2	Vestre Memurubreen (Brown Soil) sites	96
8.9	Conclusions	96

Part Three: Evidence for Human Impact

Introduction

9	Earliest palynological records of human impact on the world's vegetation	101
	D. Walker and G. Singh	
9.1	Data	101
9.2	Commentary	104
9.2.1	The nature of human impact	104
9.2.2	Gaps on the map	106
9.2.3	Time span	106
9.2.4	Oldest disturbance	108
9.3	Celebration	108
10	Vegetation change during the Mesolithic in the British Isles: some amplifications	109
	I.G. Simmons	
10.1	Introduction	109
10.2	The background	109
10.2.1	The earlier Mesolithic	109
10.2.2	The later Mesolithic	110
10.2.3	The Mesolithic–Neolithic transition	111
10.3	Two more-detailed examples	112
10.3.1	Bonfield Gill and North Gill, North York Moors	112
10.4	A wider context	117
11	The development of high moorland on Dartmoor: fire and the influence of Mesolithic activity on vegetation change	119
	Chris Caseldine and Jackie Hatton	
11.1	Introduction	119
11.2	The Black Ridge Brook model	122
11.3	Pinswell	124
11.3.1	Site location and pollen and charcoal results	124
11.3.2	Vegetation change and peat initiation	127
11.4	Comparison with Black Ridge Brook and other Dartmoor sites	130
12	Models of mid-Holocene forest farming for north-west Europe	133
	Kevin J. Edwards	
12.1	Introduction	133
12.2	Models of early farming activity	136
12.2.1	The landnam model	136
12.2.2	The leaf-foddering model	138
12.2.3	The expansion–regression model	140
12.2.4	The forest-utilization model	141
12.3	Conclusions	144

13 The influence of human communities on the English chalklands from the Mesolithic to the Iron Age: the molluscan evidence	147
J.G. Evans	
13.1 Introduction	147
13.2 Molluscan analysis	149
13.3 The Mesolithic period	150
13.4 The earlier Neolithic	151
13.5 The later Neolithic	152
13.6 The Bronze Age and Iron Age	153
13.7 Research strategy	154
14 Mesolithic, early Neolithic, and later prehistoric impacts on vegetation at a riverine site in Derbyshire, England	157
Patricia E.J. Wiltshire and Kevin J. Edwards	
14.1 Introduction	157
14.2 The site	158
14.3 Methods and presentation of results	159
14.3.1 Field sampling	159
14.3.2 Pollen analysis	159
14.3.3 Radiocarbon dating	163
14.3.4 Statistical analysis	163
14.4 Vegetation history	163
14.4.1 General	163
14.4.2 Reconstruction	164
14.5 Discussion	167
15 Holocene (Flandrian) vegetation change and human activity in the Carneddau area of upland mid-Wales	169
M.J.C. Walker	
15.1 Introduction	169
15.2 Study area	170
15.3 Research strategy	171
15.4 Methods	172
15.5 Regional pollen assemblage zones	172
15.6 Vegetation and landscape change in the Carneddau region	176
15.6.1 Early- and mid-Flandrian woodland development	176
15.6.2 Mid- and late-Flandrian woodland decline: evidence of human impact	180
15.7 Conclusions	182
16 Early land use and vegetation history at Derryinver Hill, Renvyle Peninsula, Co. Galway, Ireland	185
Karen Molloy and Michael O'Connell	
16.1 Introduction	185
16.2 Sites investigated	188
16.3 Methods	189

16.4	Results and interpretation: short profiles on Derryinver Hill	189
16.4.1	Description of soil profiles	189
16.4.2	Pollen and macrofossil analysis	189
16.4.3	Chronology, and significance in terms of land use, of events recorded in profiles DYR I, II, III and VI	196
16.5	Discussion	198
Part Four: Climatic Change and Human Impact: Relationship and Interaction		
Introduction		
17	Rapid early-Holocene migration and high abundance of hazel (<i>Corylus avellana</i> L.): alternative hypotheses	205
	Brian Huntley	
17.1	Introduction	205
17.2	The hypotheses	206
17.2.1	Succession and soil development	206
17.2.2	Migrational lag	207
17.2.3	The position of 'glacial refugia'	209
17.2.4	Late-glacial expansion	209
17.2.5	Human assistance	210
17.2.6	Climate	211
17.2.7	Plateaux in the radiocarbon timescale	213
17.3	Discussion	213
17.3.1	Rapid expansion of geographical range	213
17.3.2	Anomalous early-Holocene abundance	214
17.4	Conclusions	215
18	The origin of blanket mire, revisited	217
	Peter D. Moore	
18.1	Introduction	217
18.2	Mechanisms of blanket mire inception	219
18.3	Extent and intensity of prehistoric forest modification	221
18.4	Replacement of forest by blanket mire	223
18.5	Conclusions	225
19	Climatic change and human impact during the late Holocene in northern Britain	225
	Keith E. Barber, Lisa Dumayne and Rob Stoneman	
19.1	Introduction	225
19.2	The late-Holocene environment of northern Cumbria	226
19.3	The Roman impact on the landscape of the frontier zone	229
19.3.1	Historical accounts	229
19.3.2	Palynological evidence	230
19.4	Testing and extending the record of climatic change	233
19.5	Conclusions	235

20 Palaeoecology of floating bogs and landscape change in the Great Lakes drainage basin of North America	237
Barry G. Warner	
20.1 Introduction	237
20.2 Early investigations	239
20.3 Ecological variation	240
20.4 Distribution	241
20.5 Hydrological variation	242
20.6 Stratigraphic variation	243
20.7 Human activities	243
21 Late Quaternary climatic change and human impact: commentary and conclusions	247
F.M. Chambers	
21.1 Introduction	247
21.2 Precision and accuracy	248
21.2.1 Precision and accuracy in taxonomy and sampling	248
21.2.2 Precision and accuracy in dating	248
21.3 Climatic change and vegetational response	249
21.3.1 Climate changes of the last 500 000 years	249
21.3.2 The last cold stage	249
21.3.3 Holocene temperate forest development	251
21.3.4 Volcanic activity and effects on climate	253
21.3.5 Proxy records of climate from peat stratigraphy	254
21.3.6 Conflicting evidence of past climatic change	254
21.4 Assessment of evidence for human impact	255
21.4.1 Pleistocene human impact	255
21.4.2 Holocene human impact: a recurrent theme	255
21.4.3 Mesolithic human impact in north-west Europe	256
21.5 Concluding remarks	256
21.5.1 Timescales of change	256
21.5.2 Nature conservation and environmental management	258
Appendix	261
References	263
Index	295